



Ölbild Deutsche Meisterschaft Einzel 2017

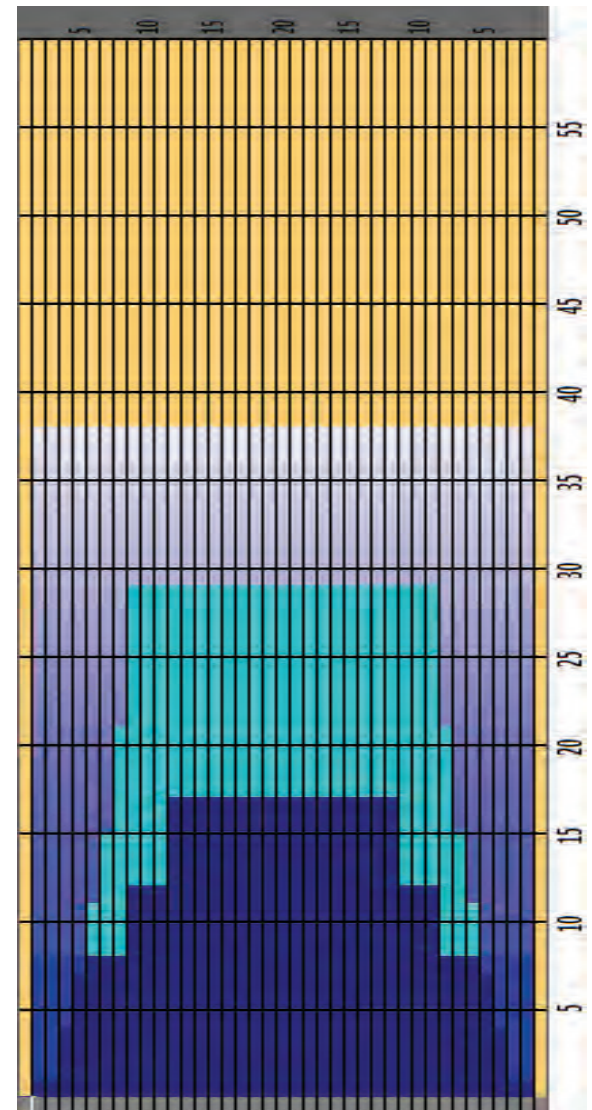


Oil Pattern Distance	38	Reverse Brush Drop	38	Oil Per Board	40 ul
Forward Oil Total	21.48 mL	Reverse Oil Total	4.68 mL	Volume Oil Total	26.16 mL
Tank Configuration	Only A	Tank A Conditioner	Fire	Tank B Conditioner	Fire

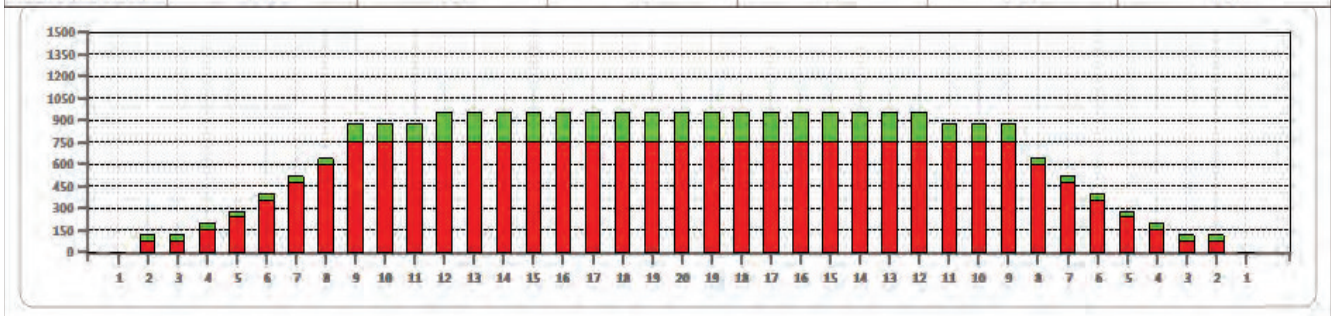
	START	STOP	LOADS	SPEED	CROSSED	START	END	FEET	T.OIL
1	2L	2R	2	10	74	0.0	1.4	1.4	2960
2	4L	4R	2	10	66	1.4	4.2	2.8	2640
3	5L	5R	2	10	62	4.2	7.0	2.8	2480
4	6L	6R	3	10	87	7.0	11.2	4.2	3480
5	7L	7R	3	10	81	11.2	15.4	4.2	3240
6	8L	8R	3	14	75	15.4	21.3	5.9	3000
7	9L	9R	4	14	92	21.3	29.2	7.9	3680
8	2L	2R	0	18	0	29.2	38.0	8.8	0

	START	STOP	LOADS	SPEED	CROSSED	START	END	FEET	T.OIL
1	2L	2R	0	30	0	38.0	17.0	-21.0	0
2	12L	12R	2	18	34	17.0	11.9	-5.1	1360
3	9L	9R	2	14	46	11.9	8.0	-3.9	1840
4	2L	2R	1	14	37	8.0	6.1	-1.9	1480
5	2L	2R	0	14	0	6.1	0.0	-6.1	0

Cleaner Ratio Main Mix NA
 Cleaner Ratio Back End Mix NA
 Cleaner Ratio Back End Distance NA
 Buffer RPM: 4 = 720 | 3 = 500 | 2 = 200 | 1 = 50



Item	3L-7L:18L-18R	8L-12L:18L-18R	13L-17L:18L-18R	18L-18R:17R-13R	18L-18R:12R-8R	18L-18R:7R-3R
Description	Outside Track:Middle	Middle Track:Middle	Inside Track:Middle	Middle:Inside Track	Middle:Middle Track	Middle:Outside Track
Track Zone Ratio	3.16	1.13	1	1	1.13	3.16





Ölbild Deutsche Meisterschaft Doppel 2017

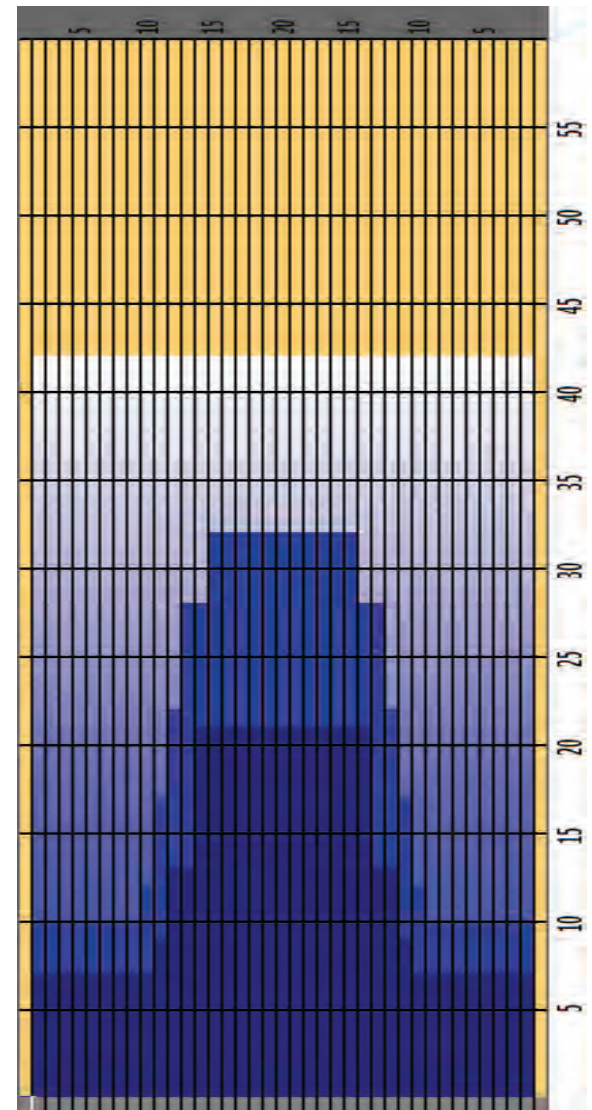


Oil Pattern Distance	42	Reverse Brush Drop	42	Oil Per Board	50 ul
Forward Oil Total	13.85 mL	Reverse Oil Total	10.4 mL	Volume Oil Total	24.25 mL
Tank Configuration	A-B	Tank A Conditioner	Fire	Tank B Conditioner	Fire

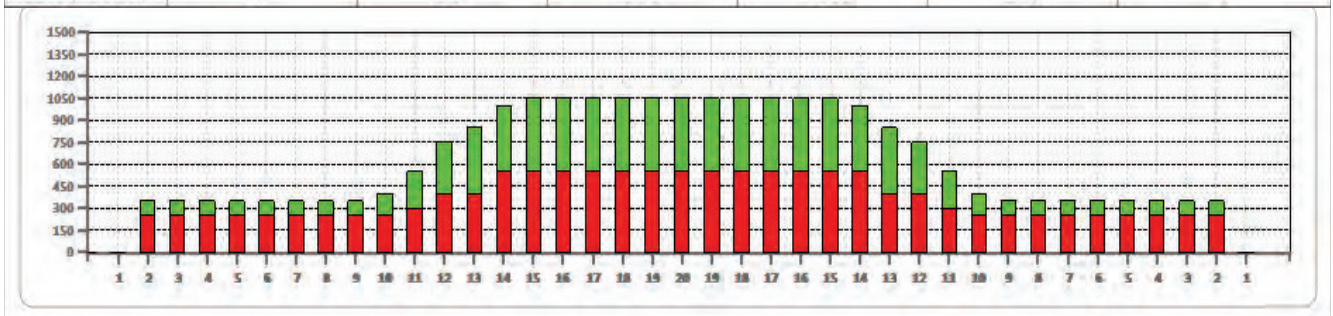
	START	STOP	LOADS	SPEED	CROSSED	START	END	FEET	T.OIL
1	2L	2R	5	14	185	0.0	7.9	7.9	9250
2	11L	11R	1	14	19	7.9	9.8	1.9	950
3	12L	12R	2	14	34	9.8	13.7	3.9	1700
4	14L	14R	3	18	39	13.7	21.3	7.6	1950
5	2L	2R	0	18	0	21.3	26.0	4.7	0
6	2L	2R	0	22	0	26.0	42.0	16.0	0

	START	STOP	LOADS	SPEED	CROSSED	START	END	FEET	T.OIL
1	2L	2R	0	30	0	42.0	32.0	-10.0	0
2	15L	15R	1	26	11	32.0	28.4	-3.6	550
3	13L	13R	2	22	30	28.4	22.2	-6.2	1500
4	12L	12R	2	18	34	22.2	17.1	-5.1	1700
5	11L	11R	2	18	38	17.1	12.0	-5.1	1900
6	10L	10R	1	14	21	12.0	10.1	-1.9	1050
7	2L	2R	2	14	74	10.1	6.2	-3.9	3700
8	2L	2R	0	10	0	6.2	1.0	-5.2	0
9	2L	2R	0	10	0	1.0	0.0	-1.0	0

Cleaner Ratio Main Mix NA
 Cleaner Ratio Back End Mix NA
 Cleaner Ratio Back End Distance NA
 Buffer RPM: 4 = 720 | 3 = 500 | 2 = 200 | 1 = 50
 This Pattern Up Loaded From Slot # 16 In Lane
 Machine On 9/10/2013 11:39 AM



Item	3L-7L:18L-18R	8L-12L:18L-18R	13L-17L:18L-18R	18L-18R:17R-13R	18L-18R:12R-8R	18L-18R:7R-3R
Description	Outside Track:Middle	Middle Track:Middle	Inside Track:Middle	Middle:Inside Track	Middle:Middle Track	Middle:Outside Track
Track Zone Ratio	3	2.19	1.05	1.05	2.19	3





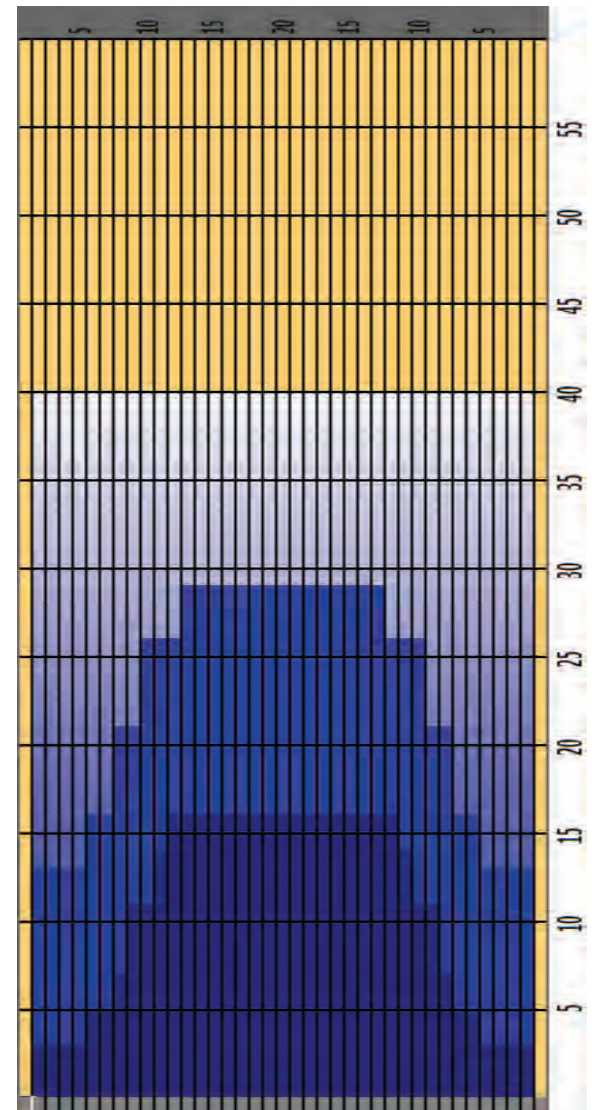
Ölbild Deutsche Meisterschaft Mixed 2017



Oil Pattern Distance	40	Reverse Brush Drop	40	Oil Per Board	50 ul
Forward Oil Total	12.35 mL	Reverse Oil Total	10.5 mL	Volume Oil Total	22.85 mL
Tank Configuration	A-B	Tank A Conditioner	Fire	Tank B Conditioner	Fire

	START	STOP	LOADS	SPEED	CROSSED	START	END	FEET	T.OIL
1	2L	2R	3	14	111	0.0	3.9	3.9	5550
2	6L	6R	1	14	29	3.9	5.8	1.9	1450
3	8L	8R	1	14	25	5.8	7.7	1.9	1250
4	9L	9R	2	14	46	7.7	11.6	3.9	2300
5	11L	11R	1	18	19	11.6	14.1	2.5	950
6	12L	12R	1	18	17	14.1	16.6	2.5	850
7	2L	2R	0	18	0	16.6	24.0	7.4	0
8	2L	2R	0	22	0	24.0	35.0	11.0	0
9	2L	2R	0	30	0	35.0	40.0	5.0	0

	START	STOP	LOADS	SPEED	CROSSED	START	END	FEET	T.OIL
1	2L	2R	0	30	0	40.0	29.0	-11.0	0
2	13L	13R	1	22	15	29.0	25.9	-3.1	750
3	10L	10R	2	18	42	25.9	20.8	-5.1	2100
4	8L	8R	2	18	50	20.8	15.7	-5.1	2500
5	6L	6R	1	18	29	15.7	13.2	-2.5	1450
6	2L	2R	2	14	74	13.2	9.3	-3.9	3700
7	2L	2R	0	14	0	9.3	0.0	-9.3	0



Cleaner Ratio Main Mix NA
 Cleaner Ratio Back End Mix NA
 Cleaner Ratio Back End Distance NA
 Buffer RPM: 4 = 720 | 3 = 500 | 2 = 200 | 1 = 50
 This Pattern Up Loaded From Slot # 14 In Lane
 Machine On 9/10/2013 11:38 AM

Item	3L-7L:18L-18R	8L-12L:18L-18R	13L-17L:18L-18R	18L-18R:17R-13R	18L-18R:12R-8R	18L-18R:7R-3R
Description	Outside Track:Middle	Middle Track:Middle	Inside Track:Middle	Middle:Inside Track	Middle:Middle Track	Middle:Outside Track
Track Zone Ratio	2.93	1.27	1	1	1.27	2.93

